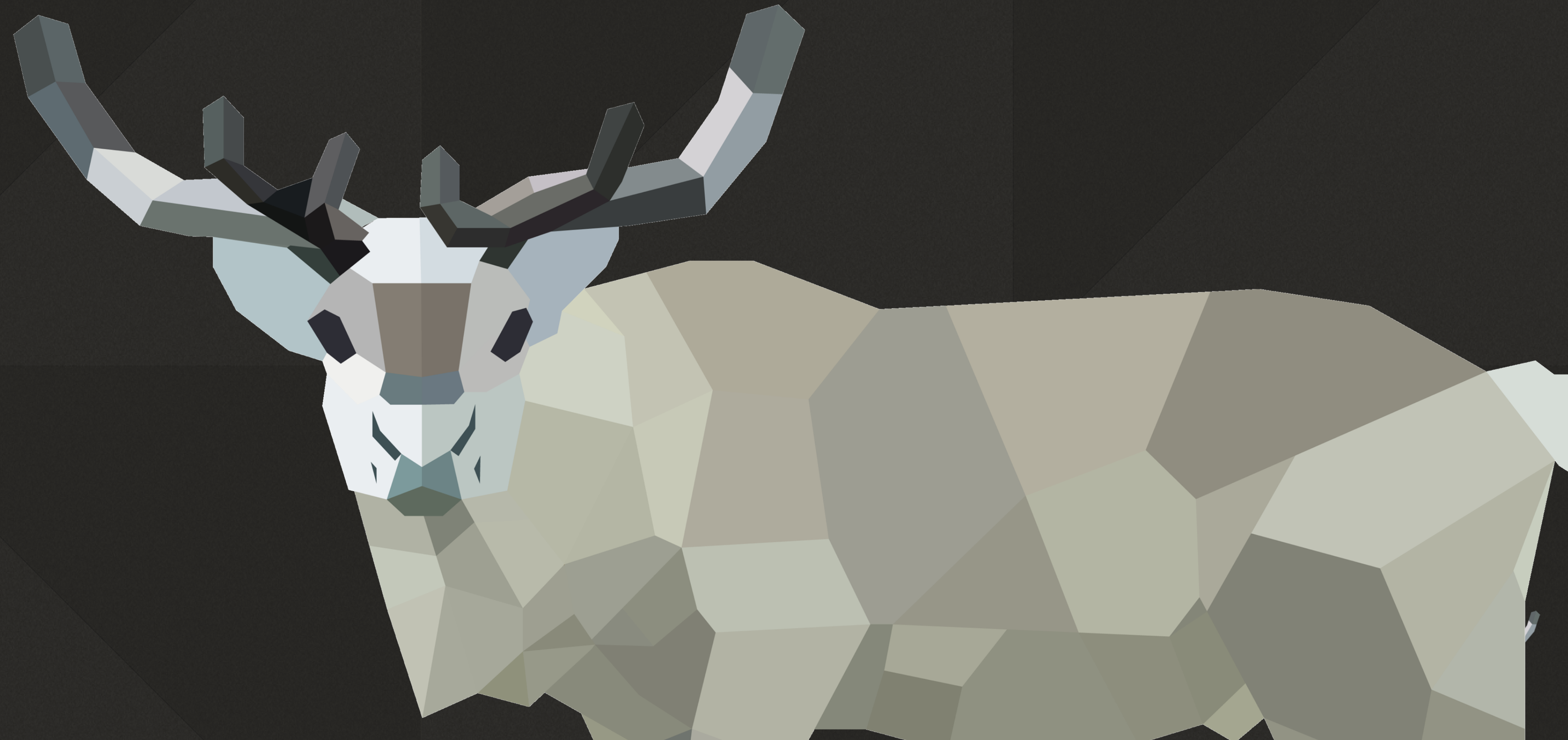
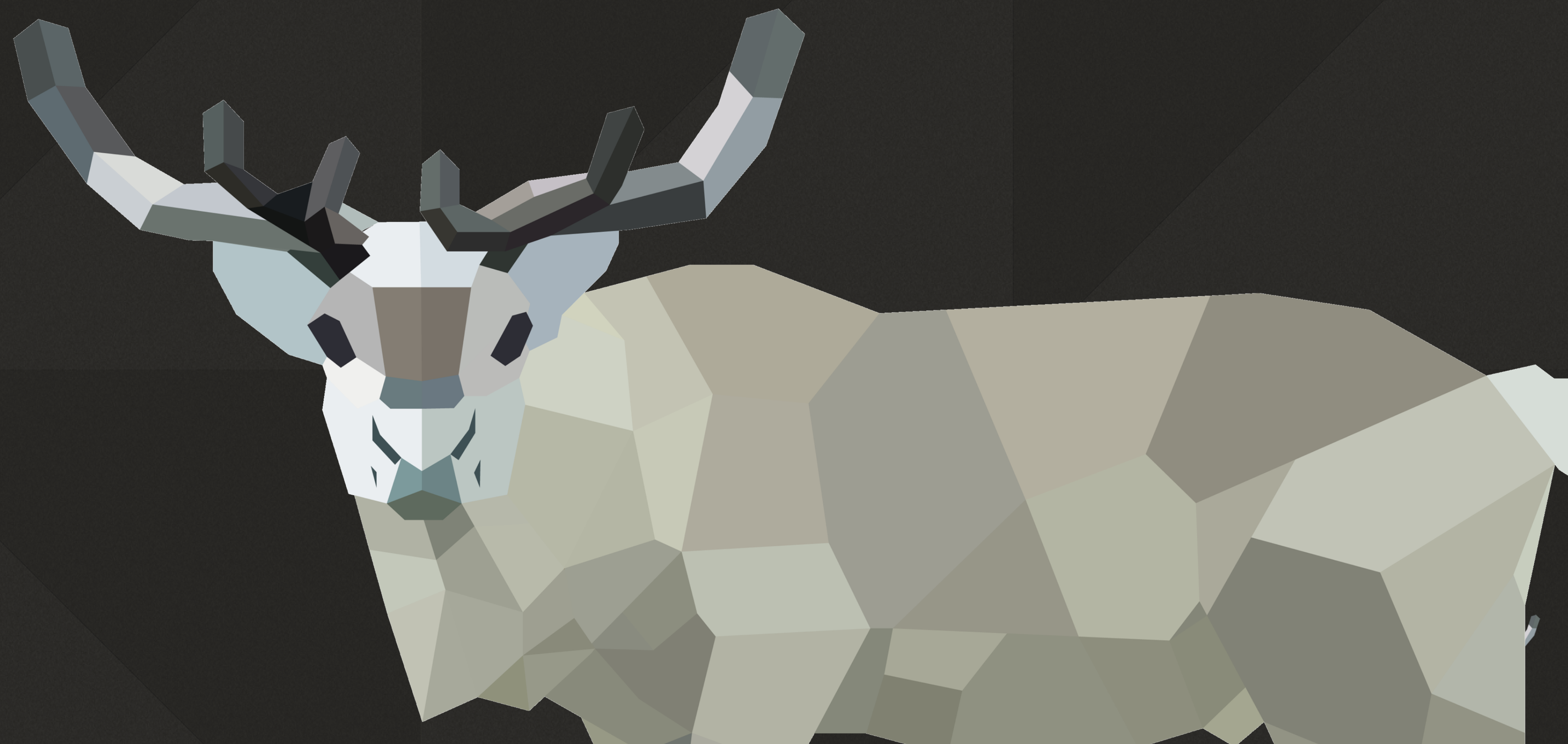




NoMAD 2.0



FOR REAL THIS TIME....



OUR STORY SO FAR...



NoMAD



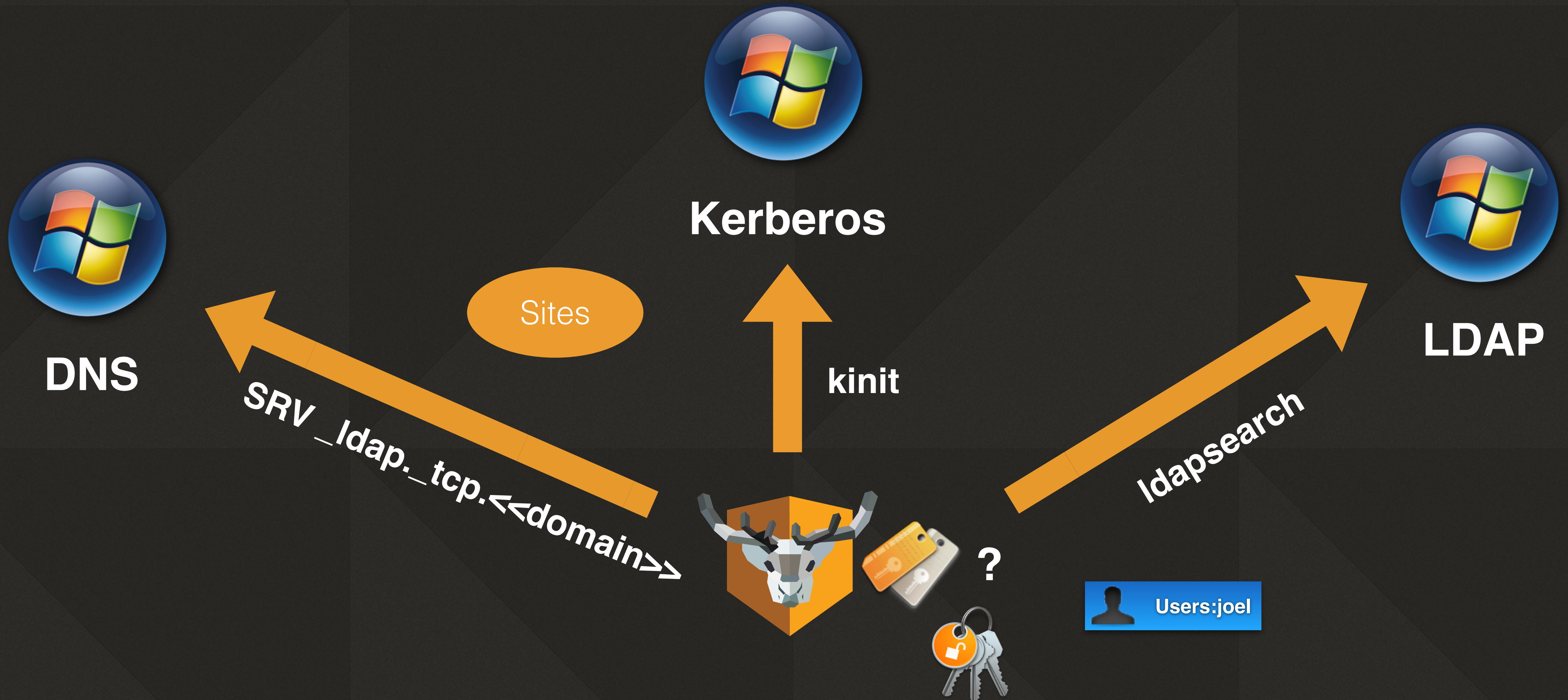
- Everything you like about AD... without the bind
- SSO, password expiration warnings, password changes, local password sync, Windows CA certificates
- Manageable via profiles/MDM
- Simple and customizable

NoMAD Process



- Look for SRV records
- Look for Kerberos tickets
- If you have both - look up user
- Compute password expiration and lots of other things
- Find groups for user

NoMAD Basic Operation



Version History

- Public beta - Sept. 2016
- 1.0 - Dec. 21, 2016
- 1.0.1 - Dec 21, 2016
- 1.0.2 - Jan. 22, 2017
- 1.0.3 - Mar. 8, 2017
- 1.0.4 - April, 17, 2017
- 1.0.5 - July 17, 2017
- 1.1 - October 2, 2017
- 1.1.x - ?
- 1.2 - ?
- 2.x - March 2018



WHY NOW?



GREAT QUESTION!



NoMAD is



- Still very much in use
- A crusty code base with many embarrassments
- A great way for admins to learn about Swift

WHAT WE'VE LEARNED



THINK BIGGER



Think Bigger



- More people using NoMAD than ever expected
- More edge cases than ever expected
- More interesting needs than ever expected

KEEP UI SIMPLE



Keep UI Simple



- Make everything configurable the same way
- Build the menu programmatically not via nib files
- Be contextual as much as possible

EASY ADMINISTRATION



Easy Administration



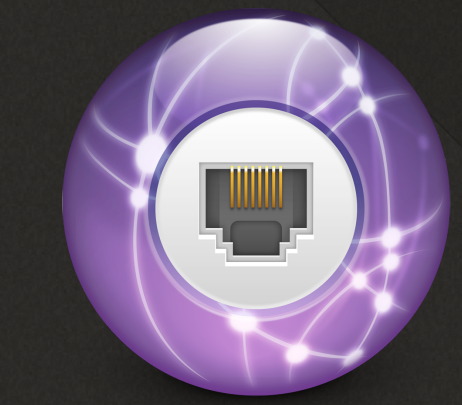
- Break major functions into separate pref domains
- More resilient preferences
- Consistent preference names, functions and behaviors



NOMAD - THE FRAMEWORK



NoMAD Framework

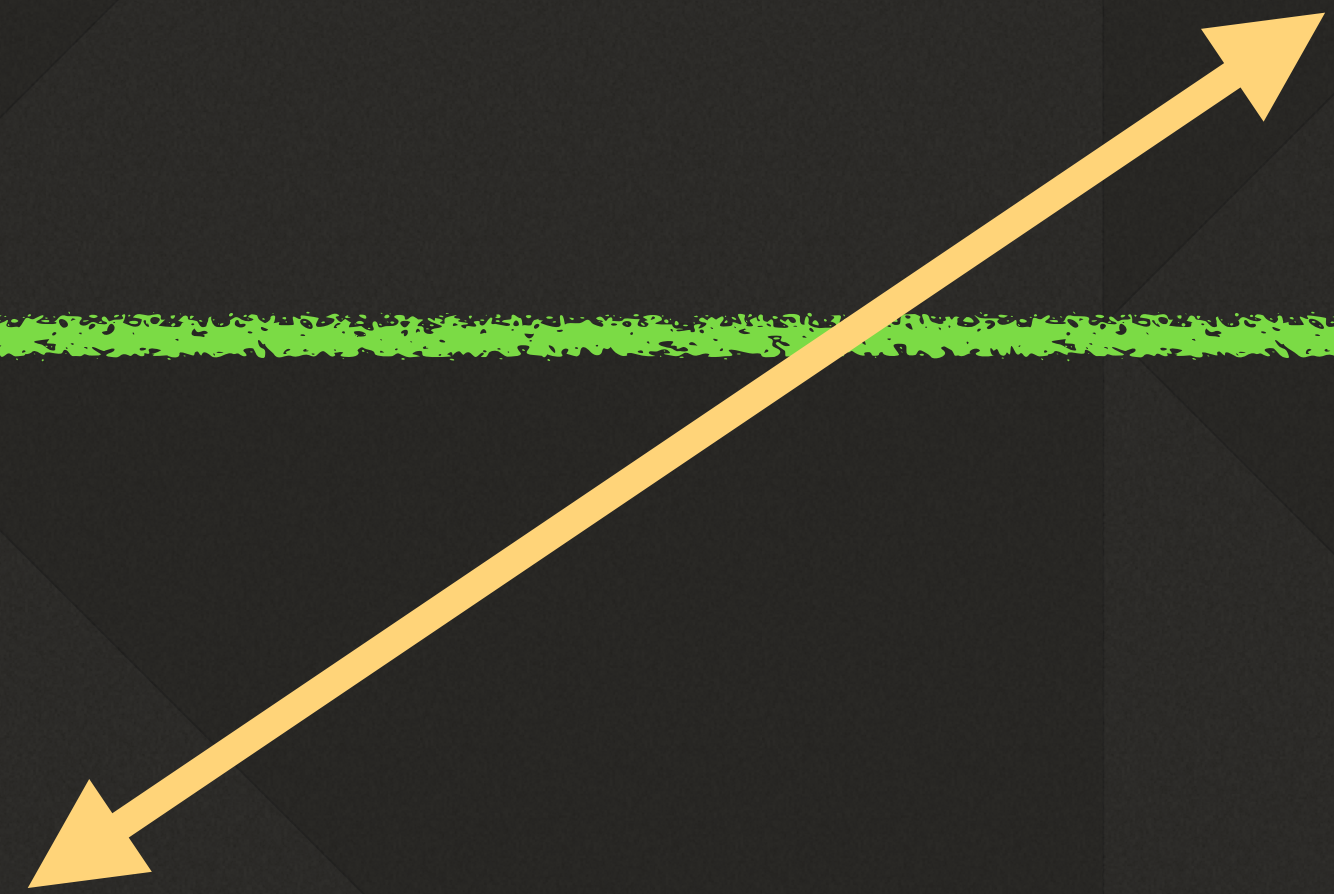
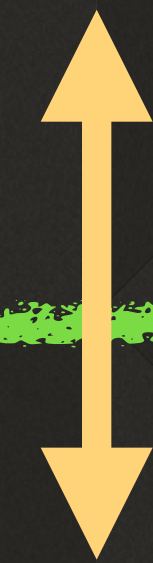
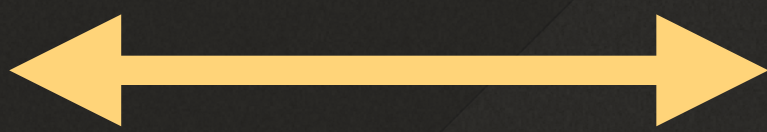


Site Manager



NoMAD Session

Expiration Manager



NoMAD 2.0

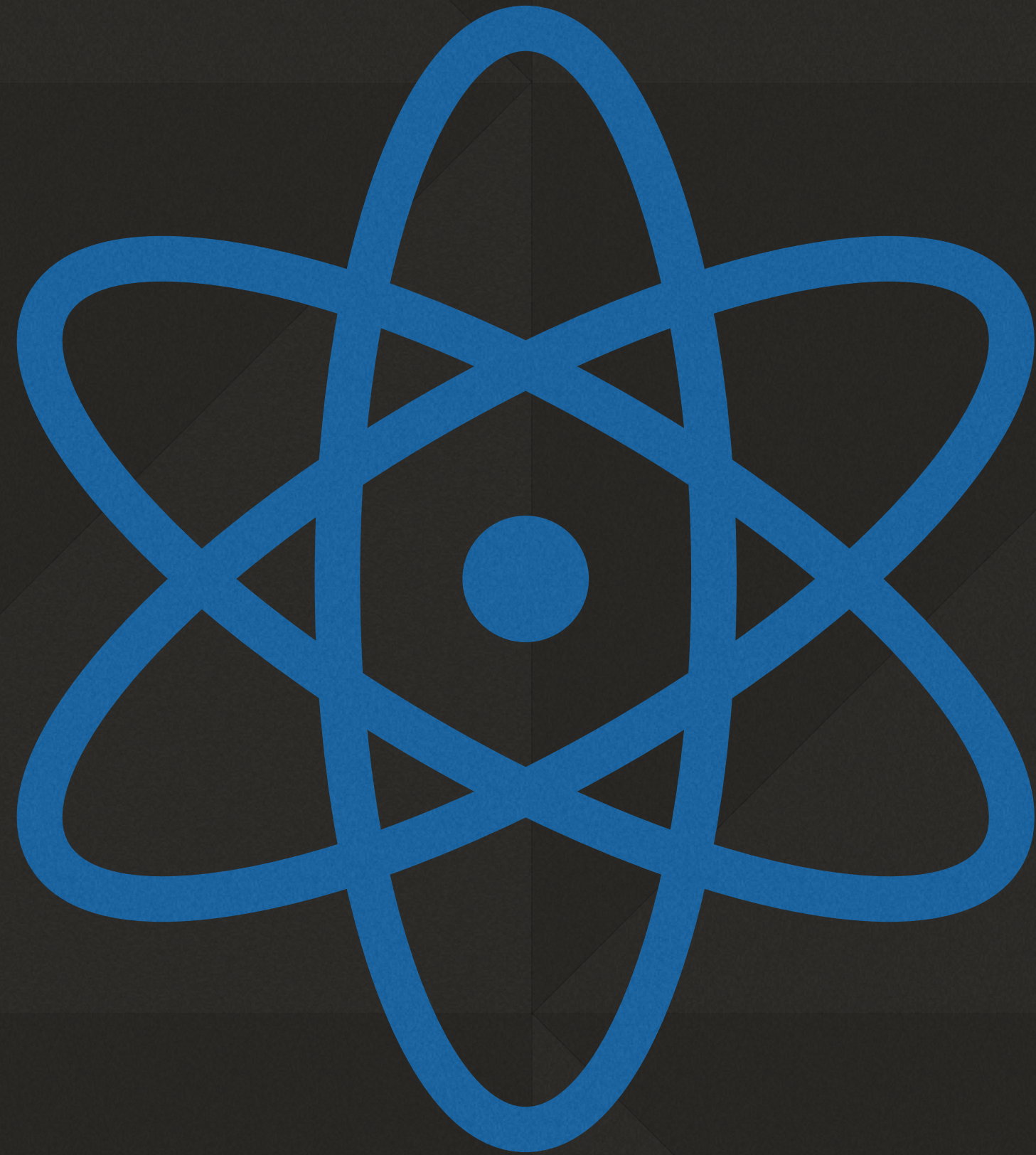


NoMAD 2.0



- Support for multiple users
- Support for multiple domains
- Action menu
- Bigger
- Better
- Faster

NoMAD 2.0



- Support for macOS 10.13 and higher
- SS0E will require 10.15+

DEFAULTS DOMAIN WILL
CHANGE!



MENU.NOMAD.NOMAD



ALL STATEFULL SETTINGS
GET NEW DOMAIN



MENU.NOMAD.STATE



DEV SIGNATURE WILL
CHANGE



WHAT WON'T BE THERE...



CERTS VIA RPC



DEMO



[HTTPS://GITLAB.COM/
MACTROLL/NOMAD2](https://gitlab.com/MACTROLL/NOMAD2)





#GoNoMAD

nomad.menu